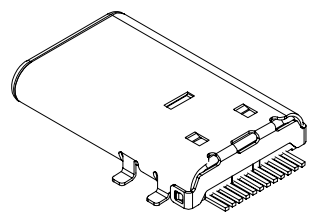
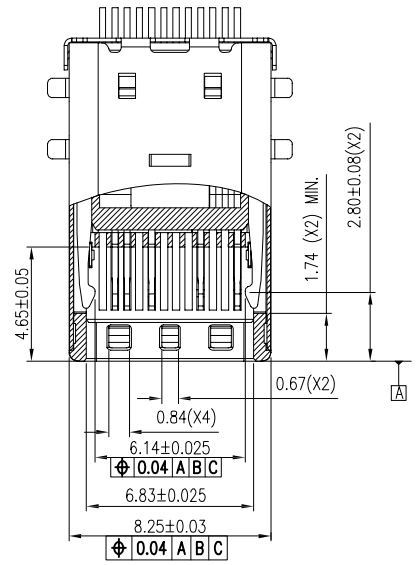
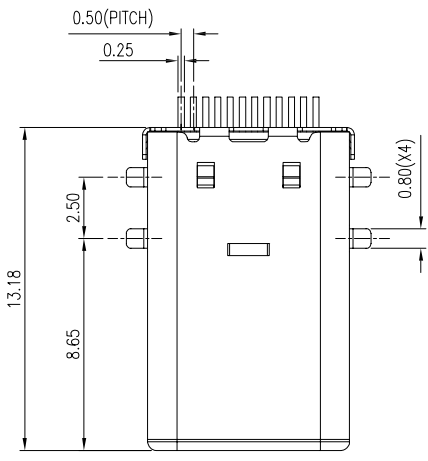
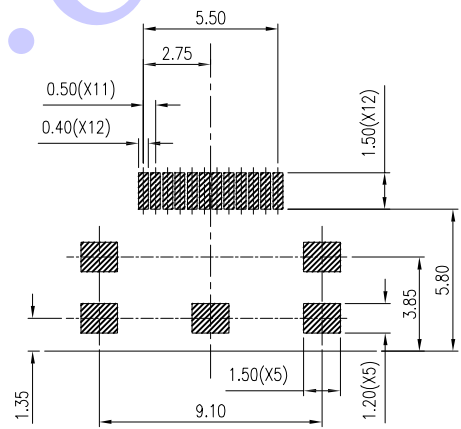
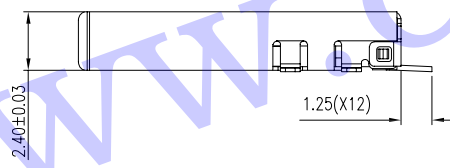
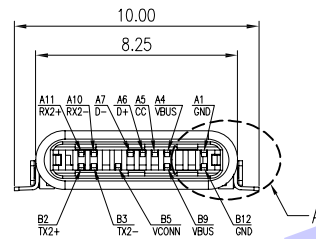


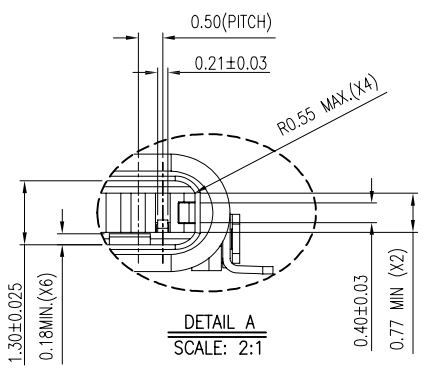
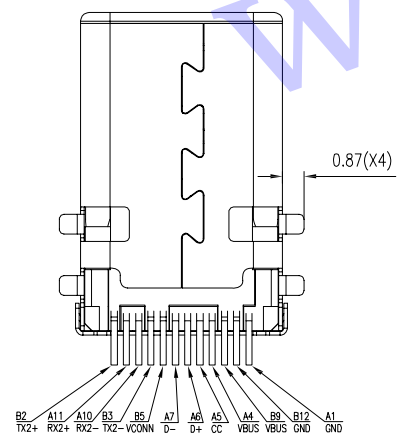
REV.	ECN. NO.	APPD.



- NOTES:
- MATERIALS:**  
 SHELL: STAINLESS STEEL, T=0.15±0.01mm  
 SPRING: STAINLESS STEEL, T=0.10±0.01mm  
 LATCH: STAINLESS STEEL, T=0.40±0.01mm  
 HOUSING: THERMOPLASTIC  
 MOLDING1: HIGH-THERMOPLASTIC+ BRONZE, T=0.20±0.01mm  
 MOLDING2: HIGH-THERMOPLASTIC+ BRONZE, T=0.20±0.01mm
  - PLATING:**  
 CONTACT: CONTACT AREA Au PLATED 30u"Min. OR REFER TO THE PART NO. CODE DEFINED. UNDER PLATE 80u"Min. NICKEL OVERALL  
 120u" Min. TIN PLATING ON SOLDER TAIL  
 SHELL: 30u"Min. NICKEL PLATING OVERALL
  - ELECTRICAL PERFORMANCE:**  
 INSULATION RESISTANCE: 100Mohm MIN.  
 CONTACT RESISTANCE: 40mohm MAX.  
 DIELECTRIC WITHSTANDING: 100 VAC  
 CURRENT RATING: 3A MIN.
  - MECHANICAL PERFORMANCE:**  
 MATING FORCE: 5~20N  
 UNMATING FORCE: 8~20N  
 DURABILITY: 10000 CYCLES



RECOMMENDED P.C.B LAYOUT  
(T=1.4±0.15)



X.	± 0.50	X.*	± 2°	UNITS	mm
X	± 0.30	.X*	± 1°		
.XX	± 0.10	.XX*	± 0.5°	MAT'L	/
.XXX	± 0.05				
THESE DRAWINGS AND SPECIFICATIONS ARE THE PROPERTY OF SHENZHEN CHUANGYUE TECHNOLOGY CO.,LTD AND SHALL NOT BE REPRODUCED, COPIED OR USED IN ANY MANNER WITHOUT THE PRIOR WRITTEN CONSENT OF SHENZHEN CHUANGYUE TECHNOLOGY CO., LTD				FINISH	/
				Q'TY	/

深圳市创粤科技有限公司

TITLE: TYPE C 12P公全贴

APPD: /

CHKD: /

DR: 2018/10/07

DWG NO.: CY-HTM3-12-1318

SCALE	SHEET	REV.
1/1	1/1	A1